

*Please support*

# Camden School for Girls



# Excellence Fund



## Supporting Camden School for Girls' Excellence Fund

Camden School for Girls is consistently identified as one of the top performing state schools in the country and we are very proud of its achievements over the past 150 years. But it is hard to imagine a time in our long history when our finances have been under as much pressure as they are now. We urgently need your support to help us to continue to provide the best education that we can for all our pupils.

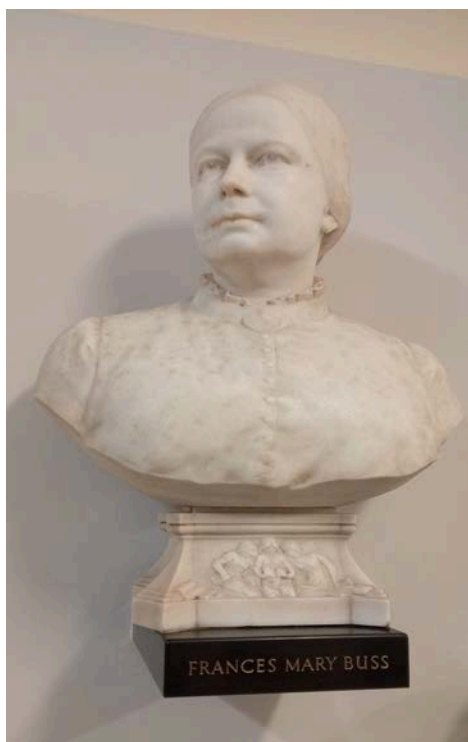


By supporting our **Excellence Fund** you will help the school continue its proud history and exceptional results.

[Please click here to donate](#)



## Camden School Foundation of Frances Mary Buss



In the mid-19th century, the school's illustrious founder, Frances Mary Buss took on the educational establishment and became one of the leading architects of state education for girls across the country. Her quietly determined and ground-breaking work established both the North London Collegiate and Camden School for Girls at a time when there were few educational opportunities for girls and certainly none for those with limited means. Her vision is remembered and celebrated every year at the school's Founder's Day and lives on in the achievements of the school, and the school's charity, the Camden School Foundation of Frances Mary Buss.





Ms Buss started her schools with the help of charitable donations rather than with government funding, and our school retains Voluntary Aided status to this day. This means the Foundation must contribute to the maintenance of the school's buildings and infrastructure and continues to support the school financially where needed. Unlike many schools in the private sector which were founded with large bequests of land or money, Camden School for Girls has no such wealth to fall back on. Instead, we rely on donations to support the best educational provision for all pupils.

The **Excellence Fund** offers every parent, alumnus and friend of the school the opportunity to donate to benefit all our students, present and future, and to tackle the urgent needs of the school. We are determined to provide the best resources and facilities possible so that the school's tradition of excellence can continue. Please support us if you can.



[Please donate by clicking here](#)



## What has caused the current financial pressure?

Our commitment to providing the very best education is shown by the fact that over 80% of the school's funding from the government goes into teachers' salaries. But over the last decade, funding has not kept pace with increased costs:

- ❖ In the decade to 2020, government funding for schools fell by almost 10% in real terms and in 2024-25 per pupil funding will still remain at least 3 per cent below the 2010 level (*Institute of Fiscal Studies*). In the same period 6th form funding fell by 25%.
- ❖ Staff pay increases have not been fully funded by the government, so the school has had to make up the difference from savings elsewhere
- ❖ Increased staff pension costs have also been unfunded by government
- ❖ Energy costs have grown dramatically
- ❖ General inflation has had a big impact over the last two years
- ❖ The Covid period has reduced our fundraising income significantly

We are now facing a financial crisis. The shortfall between government funding and the school's essential costs will reach £350,000 in the 2024/2025 accounting period.





The school has managed to avoid budget deficits in the past by extremely careful management of funds, by covering any shortfalls from fundraising and by digging into our reserves. We have fought hard to retain and bolster our exceptional team of highly qualified and dedicated teachers. And we have protected our broad curriculum and extracurricular offering which is the envy of many other schools. This is reflected in the incredible results that our pupils achieve year after year.



But protecting our staff and curriculum has come at a cost and the school's reserves are almost fully depleted. Our Voluntary Aided status means we must contribute over 10% of the cost of maintaining our buildings and facilities, many of which are ageing. Whilst we have been able to refurbish some areas with the generous support from the local authority and parents' contributions, many of our school buildings are old and their maintenance is expensive. Some elements are rapidly deteriorating and are in urgent need of repair. Even some of the basics, like redecoration and replacement of old classroom furniture have become priorities.

To continue to provide the best possible learning environment and facilities for our pupils we are increasingly having to rely on the support of the wider school community.

**In these uncertain times, your help is urgently needed, as state funding alone looks unable to provide the educational funds that all our pupils need and deserve.**



## Welfare Fund

The main school community is diverse and includes many pupils from disadvantaged backgrounds. Within the Excellence Fund, The Camden School Foundation of Frances Mary Buss has a Welfare Fund to help those in need to access the same quality of education and broad extra-curricular offering as any other student. The Welfare Fund is allocated by the headteacher at her discretion to those in need of support and your donation to the Excellence Fund will ensure this can continue.



## How you can help

We are fortunate in having an engaged community of parents, friends and alumni, many of whom support the school financially and we are extremely grateful to them. In response to our appeals over the past year and despite the pressures of a cost-of-living crisis, the number of parents donating has increased to 15%.

But we need to increase this further, by encouraging more parents to donate on a monthly basis. Our aim now is to get at least 50% of parents to contribute as well as growing contributions from the wider community.



Over the last few years, The Excellence Fund has contributed to new computers, interactive panels, design and technology equipment, IT classroom upgrades, kitchen equipment, toilet refurbishment and complete redecoration of the second floor of the main building, to mention just a few. Over the next few years calls on the Fund will increase.



In these difficult times we need more support than ever before to allow us to continue to provide the best teaching and learning environment. We need your help to ensure that an excellent education along with exceptional extra-curricular activities, pastoral care, trips, performances and additional support to all our pupils is guaranteed.







**You can help by making a donation now** and encouraging others to do so. As an example, if 50% of parents donated £1 per day (£30 per month), then we could raise over £150,000 each year for the school which would be a huge help. We recognise that not everyone will be able to donate at the same level or even at all. However, we ask that everyone considers making a gift at a level that is appropriate to them, taking existing commitments into account. Remember that by making a regular monthly payment, this can mount up to significant sums over the course of your child's time at CSG.

<u>Monthly donation*</u>	<u>Annual value</u>	<u>Over 5 years</u>
£100	£1,200	£6,000
£50	£600	£3,000
£30 (Just £1 per day)	£360	£1,800
£10	£120	£600

*\*Some families have donated at higher levels than these*

If you are a UK taxpayer, please remember to tick the Gift Aid box on the donation form which will add 25% to the value of your donation at no cost to you.

**Please donate [HERE](#)**

Whatever help you can give is deeply appreciated.

Thank you.

**Kateryna Law**  
**Headteacher**

